



Healthy Streets update

Healthy Streets & Spaces Strategy

Healthy Streets Pilot

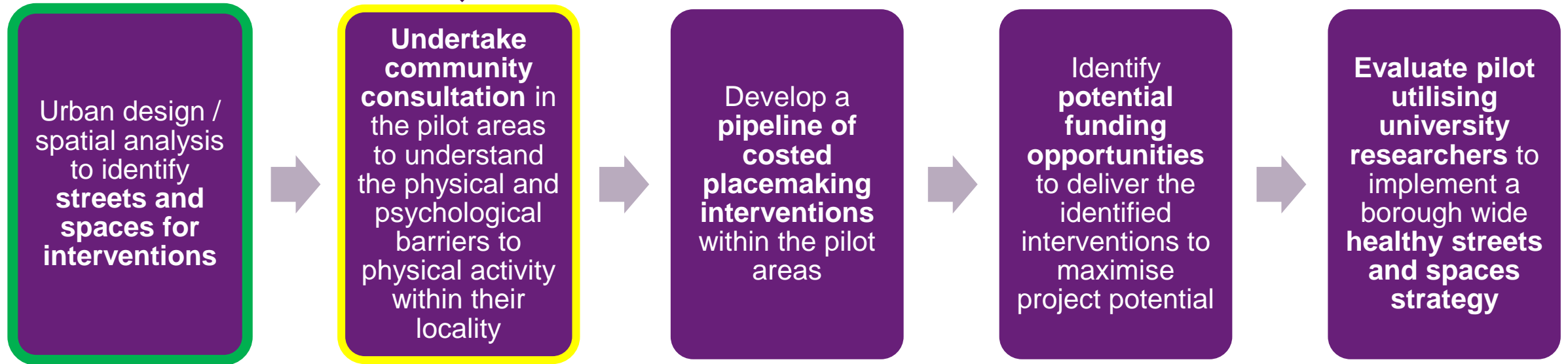
Project recap



Healthy Streets Pilot

Project Strategy

Current



Healthy Streets Pilot

Focus areas



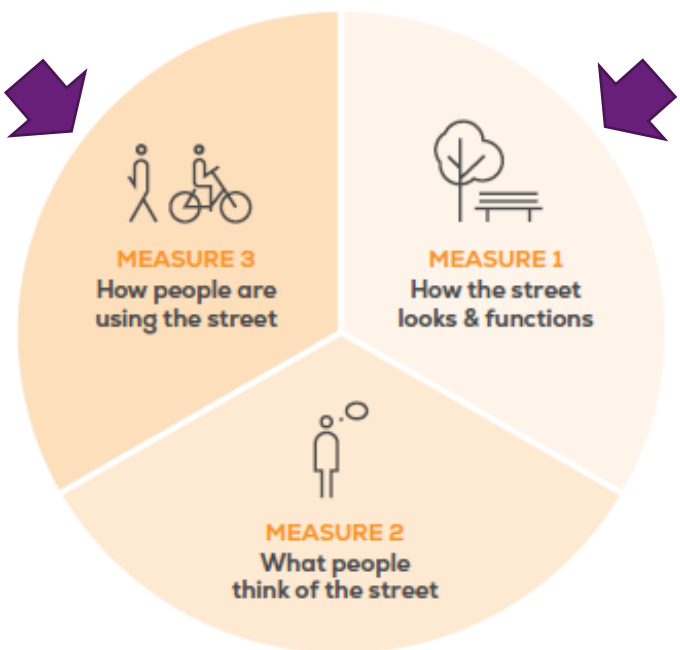
High Newham Road, Hardwick



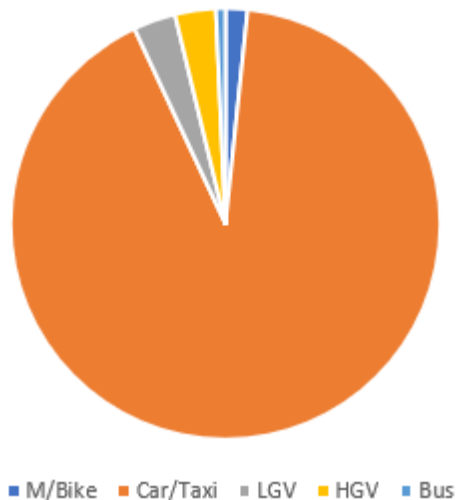
Bedford Street / Newtown Avenue,
Newtown

Healthy Streets Pilot

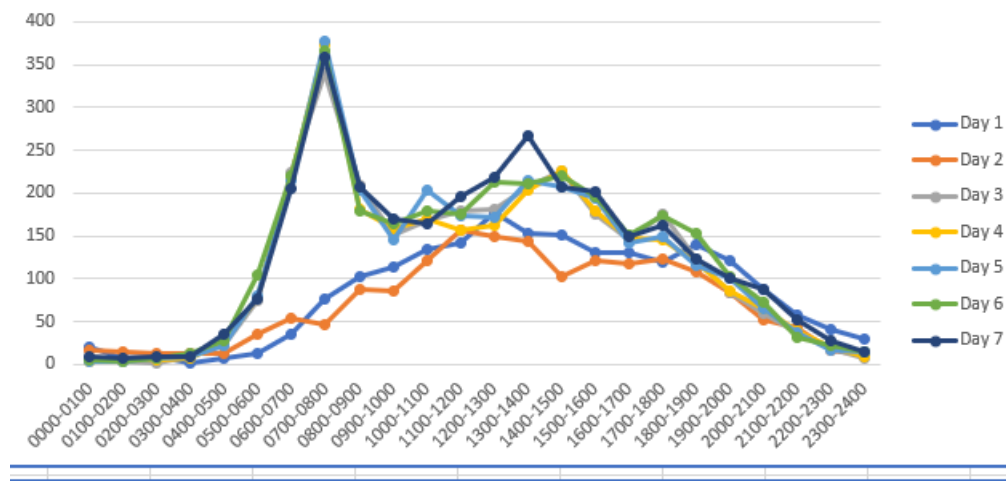
Traffic surveys



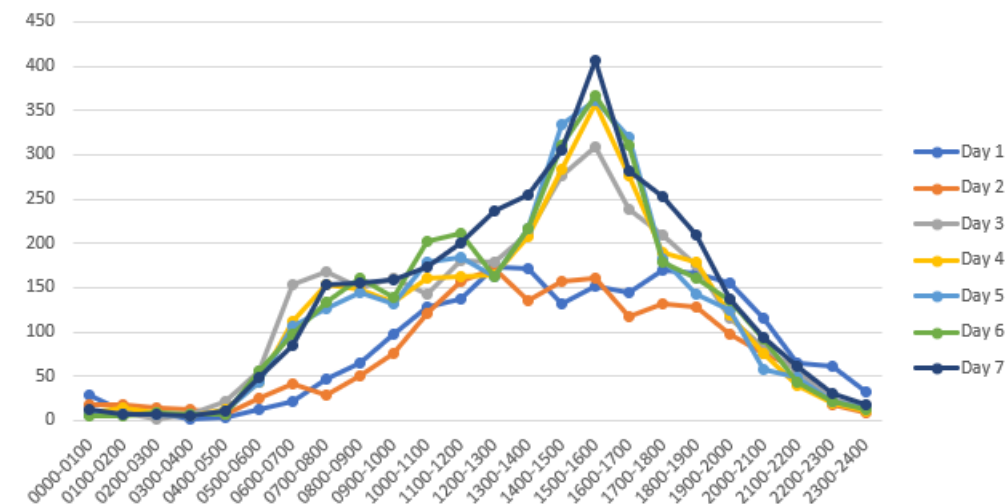
Traffic Flow by Class



East Bound



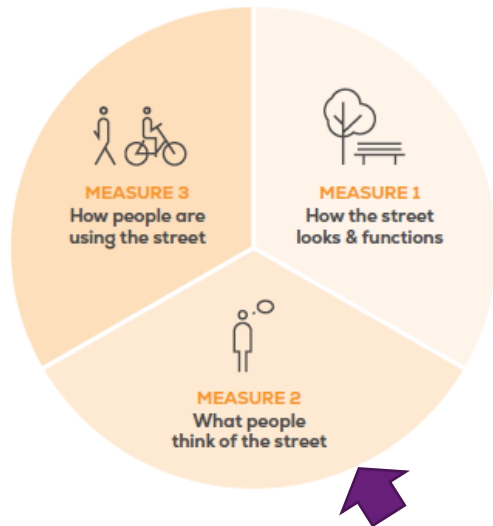
West Bound



Extracts from automatic traffic count taken on High Newham Road

Healthy Streets Pilot

Community engagement - survey



- Community surveys are currently live on the “My views” platform
- Surveys are running until 31st July 23
- Leaflets promoting the surveys have been distributed to local residents, businesses and community groups in both areas

Healthy Streets in

Bedford Street in Newtown

 Have your say

Stockton-on-Tees Borough Council are working to make streets and public spaces in your area more attractive and welcoming to use, giving you more opportunities for walking, cycling or just spending time outdoors. To do this, we need to understand how you view and use your local streets.

How do you choose to get around your neighbourhood?

How do you feel about the street?

What changes could make your area more welcoming?

If you are local to **Bedford Street in Newtown** we would like to hear from you.

Scan the QR code or visit www.stockton.gov.uk/healthy-streets-newtown to complete the online survey or to find out more.

 If you'd like a paper copy of the survey, please contact placdevelopment@stockton.gov.uk or call 01642 526595.

Healthy Streets in

High Newham Road in Hardwick and Salters Lane

 Have your say

Stockton-on-Tees Borough Council are working to make streets and public spaces in your area more attractive and welcoming to use, giving you more opportunities for walking, cycling or just spending time outdoors. To do this, we need to understand how you view and use your local streets.

How do you choose to get around your neighbourhood?

How do you feel about the street?

What changes could make your area more welcoming?

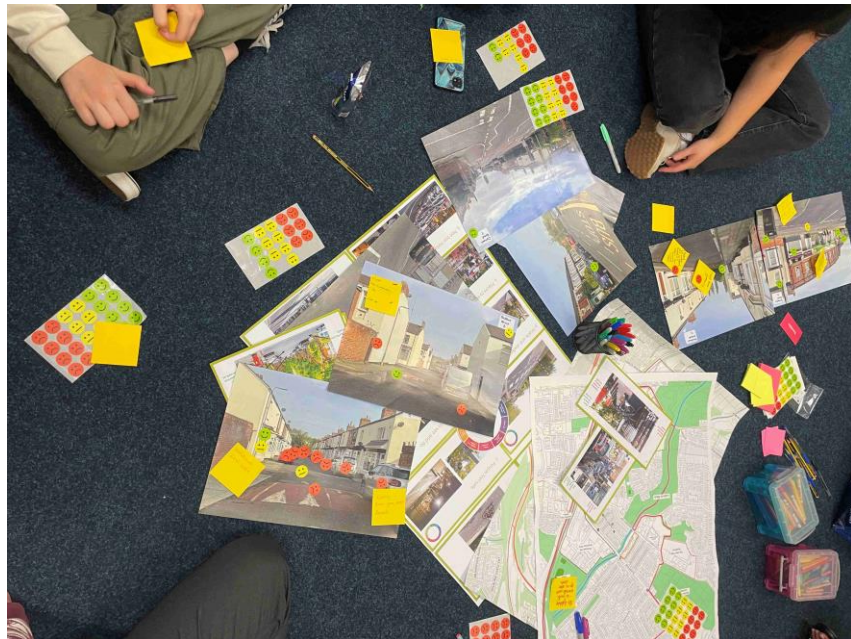
If you are local to **High Newham Road in Hardwick and Salters Lane** we would like to hear from you.

Scan the QR code or visit www.stockton.gov.uk/healthy-streets-hardwick-salters-lane to complete the online survey or to find out more.

 If you'd like a paper copy of the survey, please contact placdevelopment@stockton.gov.uk or call 01642 526595.

Healthy Streets Pilot

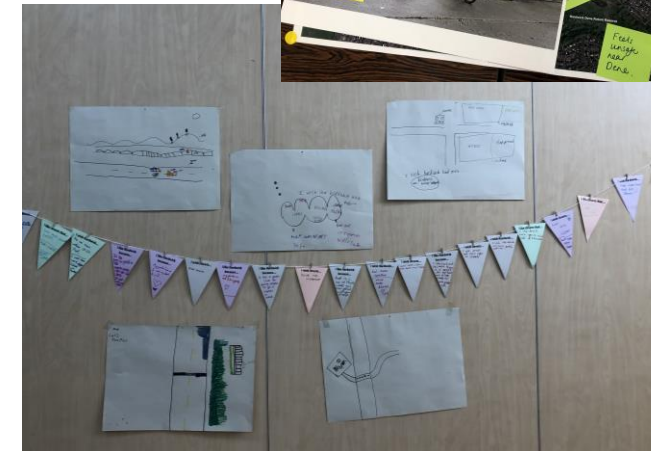
Community Engagement – focus groups



Cornerhouse Youth Project
(Newtown)



Abbey Hill Secondary school
(Hardwick)



HYPE youth Group (Hardwick)

Healthy Streets Pilot

Next steps

- Resident's survey running to 31st July
- Aspen Garden's resident focus group - August
- *In planning* – a series of “creative engagement events” over the summer holidays facilitated by university researchers - August 23
- *In planning* – A design team to be appointed to work on design stage from September – November 23

